

SNDT Women's University

Shreemati Nathibai Damodar Thackersey Women's University



NAAC - SSR

CRITERION VII

Supporting Documents

for

7.1.2: The Institution has facilities for alternate sources of energy and energy conservation measures

- 1. Solar energy**
- 2. Biogas plant**
- 3. Wheeling to the Grid**
- 4. Sensor-based energy conservation**
- 5. Use of LED bulbs/ power efficient equipment**
- 6. Wind mill or any other clean green energy**

INDEX

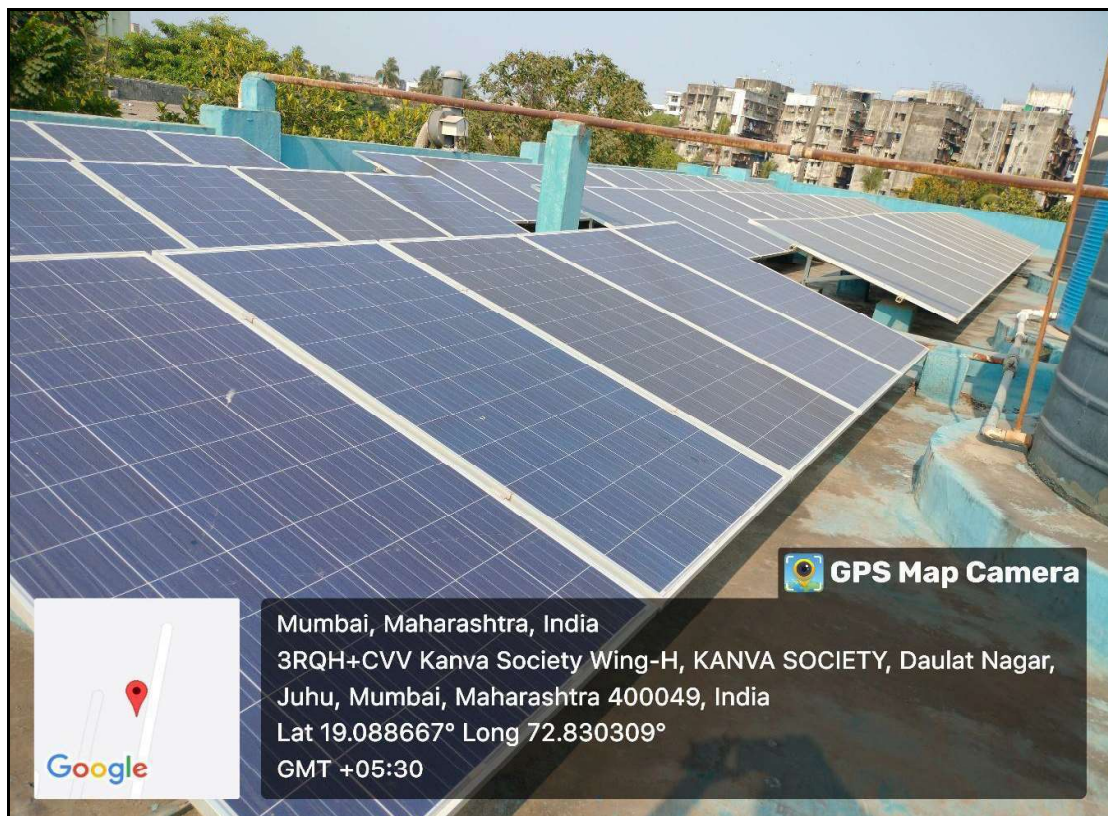
Sr. No.	Content	Page No.
1	Geotagged Photos of Solar Panels at Juhu	1-2
2	Geotagged Photos of Solar Panels at Pune	3
3	Sensor Based Lights at Toilets of Maharshi Karve seminar complex in Churchgate campus	4-5
4	Use of LED bulbs in the campuses	6-12
5	Use of Power Efficient Equipments	13-16

7.1.2 Geotagged Photographs of the Facilities

Solar Panels at Juhu Campus



Solar Panels at Juhu Campus



Solar Panels at Pune Campus

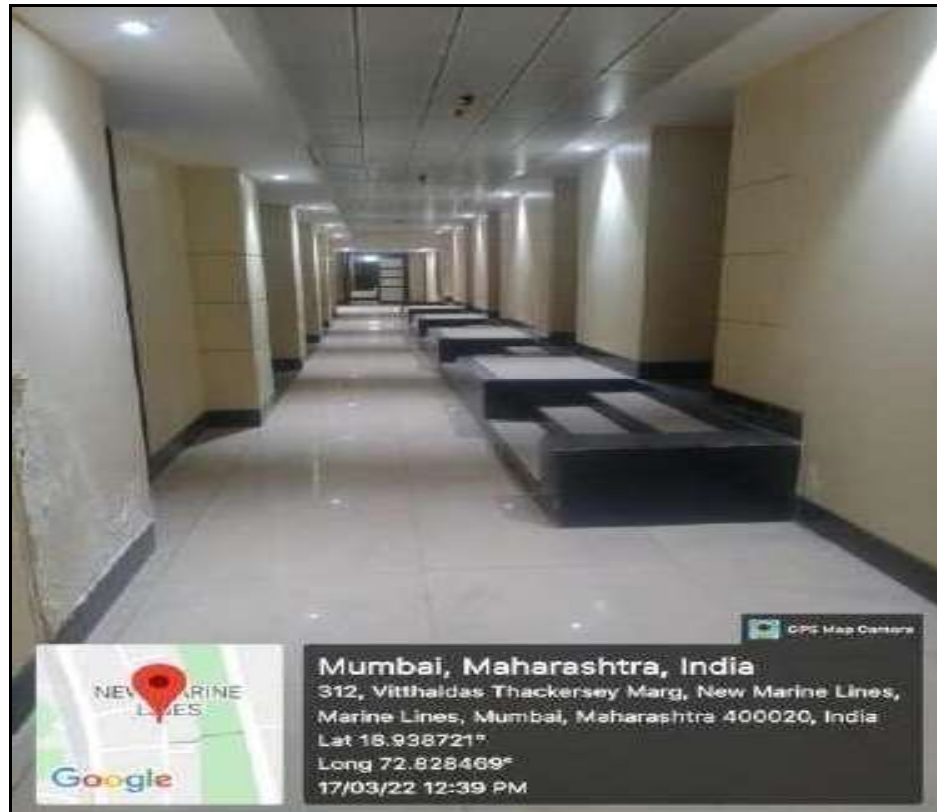


Sensor-based energy conservation: Sensor based lights are used in Churchgate Campus to add to already existing energy conservation methods. Sensor based lights save energy by automatically putting off the lights when not in use. Sensor based LED lights are available at Toilets of Maharshi Karve seminar complex in Churchgate campus.

Sensor Based Lights at Toilets of Maharshi Karve seminar complex in Churchgate campus



Sensor Based Lights at Toilets of Maharshi Karve seminar complex in Churchgate campus



1. Use of LED bulbs/ power efficient equipment: Yes.

LED Lights are energy efficient and they have long life span. They offer improved environment performance. They work at low voltages. LED provides instant light and they can withstand frequent switching. Apart from sensor-based LED lights, various colleges, departments at SNDTWU, where renovation and repair work is carried out, the old tube lights are replaced by LED lights.

LED Lights at Bharat Ratna Maharshi Karve Knowledge Resource Centre



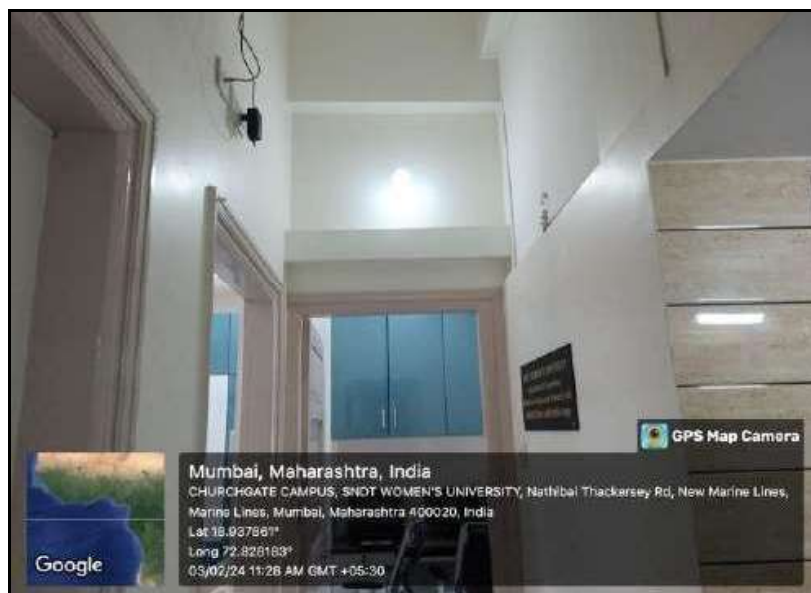
LED Lights at Bharat Ratna Maharshi Karve Knowledge Resource Centre



LED lights at Special Education Department, Juhu Campus



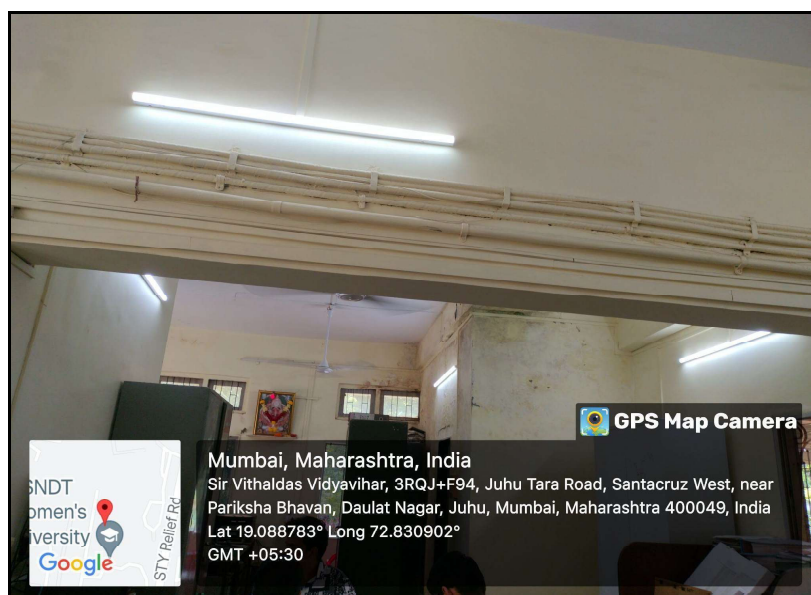
LED lights at Economics Department, Churchgate Campus



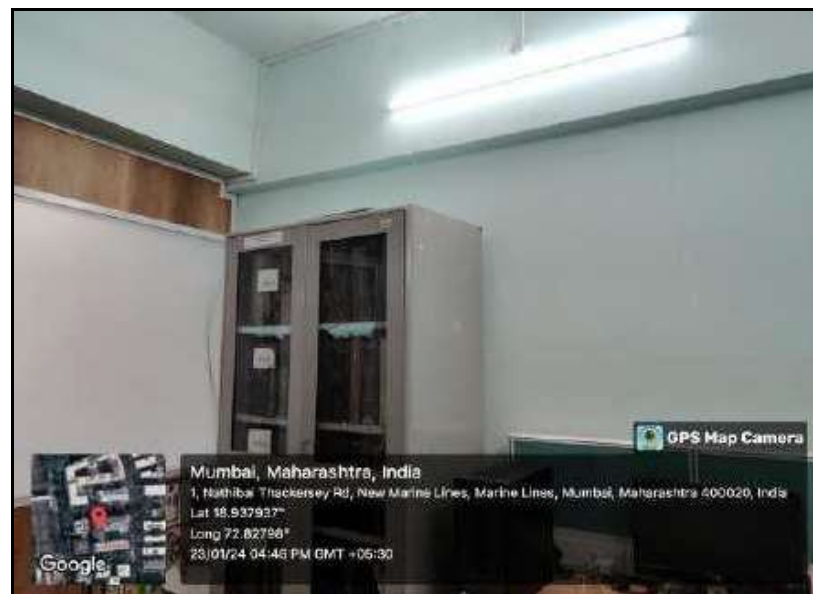
LED lights at Hostel, Pune Campus



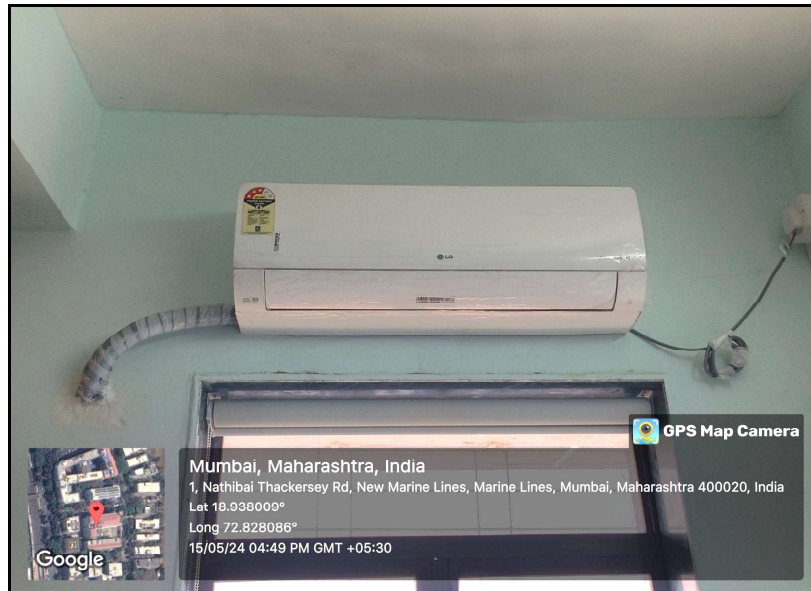
LED lights at C. U. Shah College of Pharmacy, Juhu Campus



LED lights at Department of Hindi, Churchgate Campus



Power saving Air Conditioner at Psychology Department



Power saving Air Conditioner at Special education department



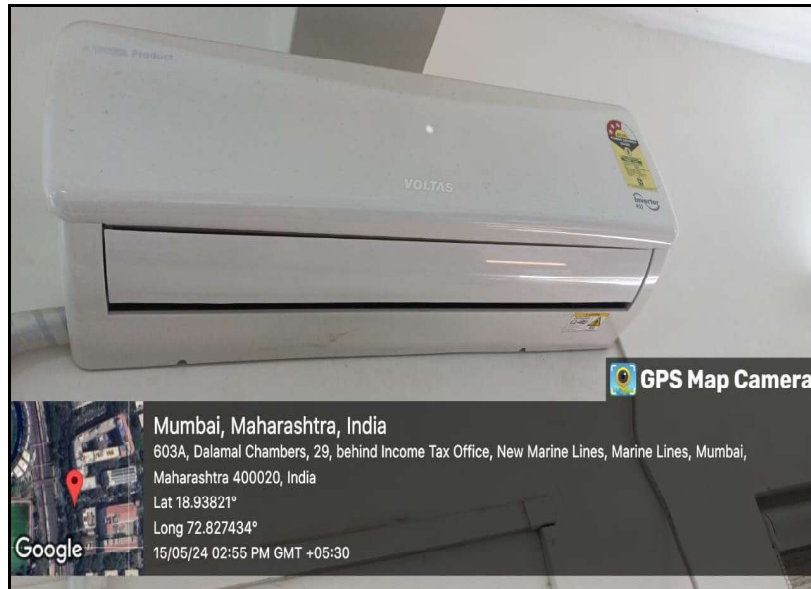
Power saving Air Conditioner at Hindi Department



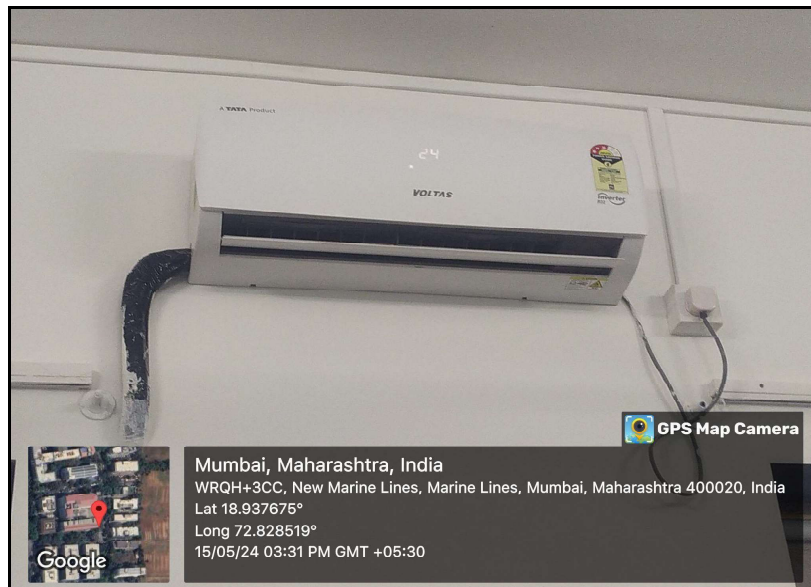
Power saving Air Conditioner at Commerce department



Power saving Air Conditioner at Gujrati Department



Power saving Air Conditioners at Music Department



Power saving Air Conditioner at C. U. Shah College of Pharmacy



Power saving Refrigerator at C. U. Shah College of Pharmacy

